

Better Care End of Year Report

Performance Charts

Figure 1

The charts below show performance against the 26.6 daily target for Southampton as a whole and split by NHS, Social Care and "Both" delays:

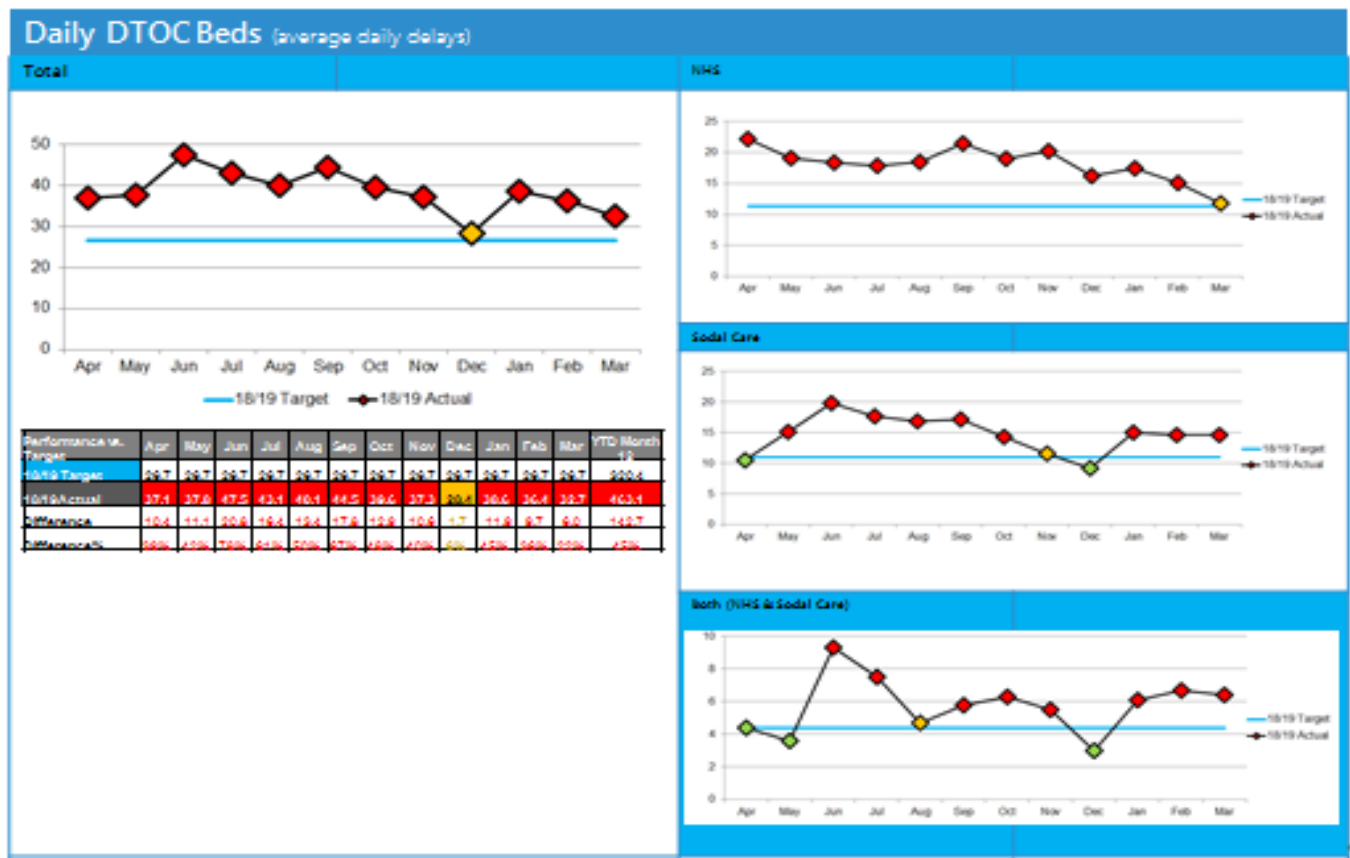


Figure 2

The charts below show the rate for the daily average delays per 100,000 over 18 population and how Southampton compares to the national average and other Local Authorities:

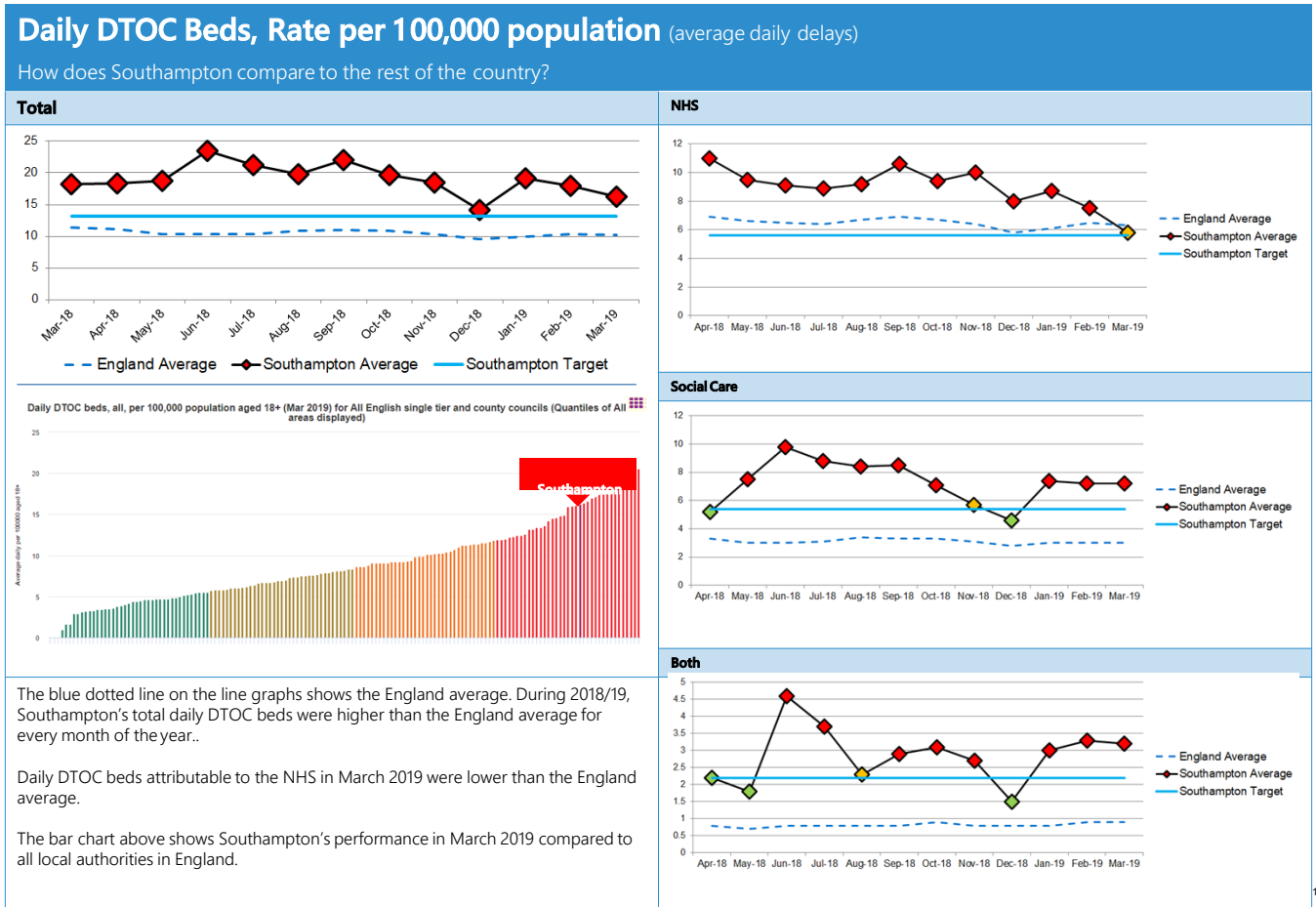


Figure 3

The majority of the increase has been in short stay admissions (less than one day) – 13% increase compared to previous year for children and 12% for over 65s. This is shown in the charts below:

